

# Steering Wheel Quick Release

Ian Brett

**There have been a number of incidents involving 5 Speeder steering wheels inadvertently becoming detached.**

The 5 Speeder has a steering wheel quick release (QR). This is disabled with an anti-tamper bolt when the car is supplied new from manufacturer. Most dealers point out to customers that the steering wheel can be quickly removed for easy access and the anti-tamper bolts are usually removed for this reason. This didn't seem to be a problem for many years when the quick release unit was supplied by a company called Lifeline. For some reason in April 2017 the QR unit was changed for one manufactured by a French company, Traven.



*Steering column, wheel removed*

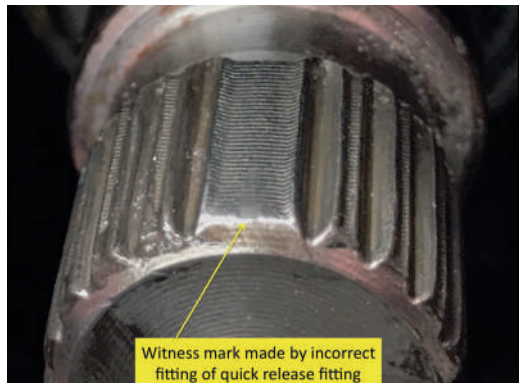


*Traven quick-release assembly*

The Traven QR has finer splines than the earlier Lifeline item; these splines seem to be poorly formed when examined closely. There is a wider master spline on both types of QR but the Traven one can be misaligned yet still allow the steering wheel to be partially fitted/wedged into place. Thus to the unwary the steering wheel can appear to be locked into position, when it isn't.

The Traven QR is fitted to 5 Speeders built after April 2017.

Once you have mastered the art of sliding

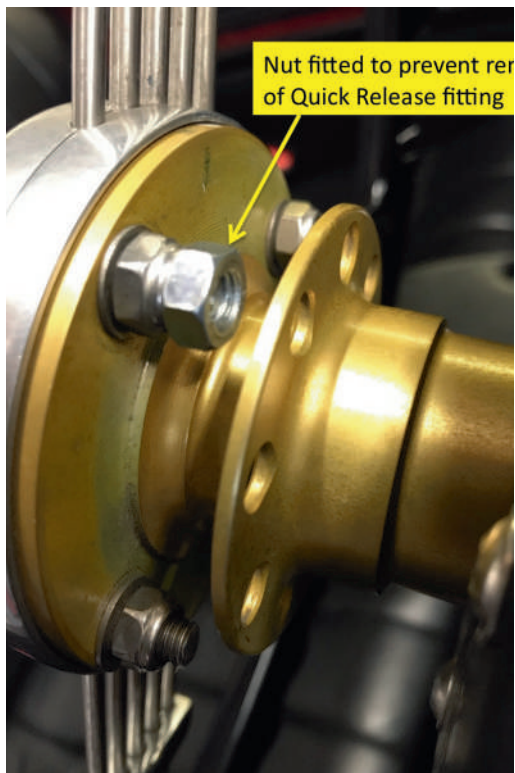


in and out of the car they do not need to remove the steering wheel. Therefore, I would advise all 5 Speeder owners to disable the steering wheel quick release unit, no matter what type is fitted. This can be easily achieved by fitting an additional nut on a wheel-to-QR retaining bolt. This will prevent the release collar moving fully and not allow the wheel to be removed. The benefits are that it will prevent anyone tampering with the steering wheel when you are not with the car, theft of the wheel or inadvertent operation of the QR. It is easily reversible for maintenance access.

If you have a car with a Traven QR, check that it is correctly fitted by removing and refitting the steering wheel. It should come off and refit without having to force it, sliding over the master spline and fully locking in place with the release collar clicking into place. Once you have established it is correctly fitted, put the extra nut on one of the wheel fixing bolts and leave it in place.

If you are in any doubt that the Traven QR can be incorrectly and insecurely fitted have a look at this clip posted by a concerned owner to illustrate the problem.

<https://youtu.be/h5JQWO8nv0A>



---

**Please submit all material for the December Bulletin BEFORE Dec 5th.  
Our printer at Lavenham Press wants a Christmas holiday as well!**

---



© Tony Tebby

*At the AGM - David James and Paul Jowitt (who's the 5-speeder?)*