

Installation of updated pinion pulley and camshaft flange nuts Jamie Havlik 9/18/14

Please read entire instructions before starting.

Remove belt cover. Rotate engine to FTDC, and remove timing belt according to service manual. Note direction of belt so it will be installed in same direction.

Remove pinion pulley using Torx Plus 45 driver. Clean surfaces as necessary.

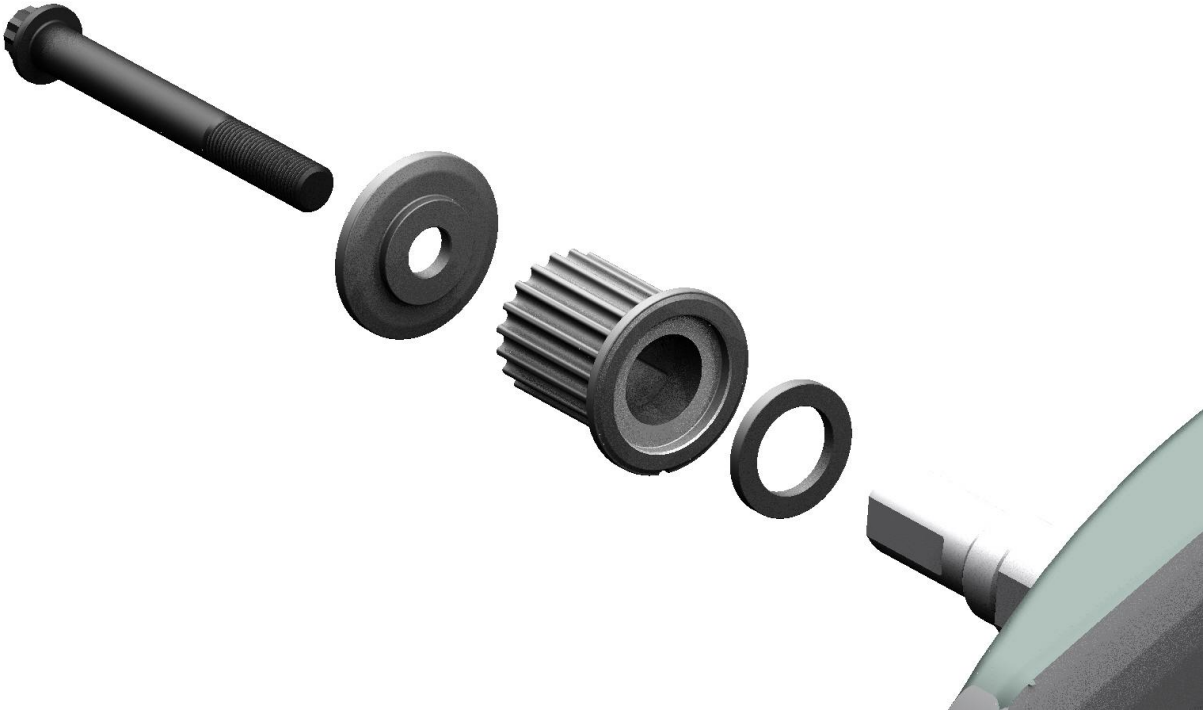
To install:

Use the bottle tip or a swab to wipe some loctite 243 (blue) around the inside of the pulley where it contacts the crankshaft.

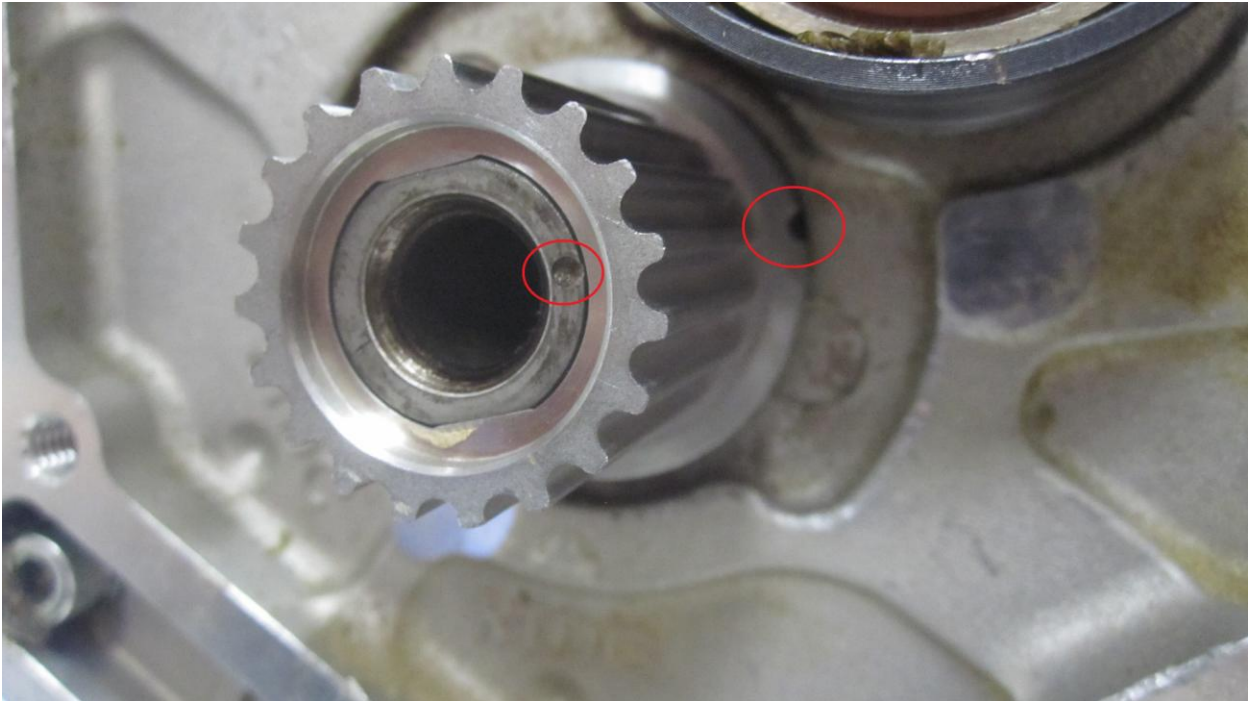


It is important to apply the loctite in this manner so it smears across the crankshaft surface when installed.

Now install hardened washer and pulley onto crankshaft as shown below:



Make sure timing notch on pulley is lined with dot on crankshaft:



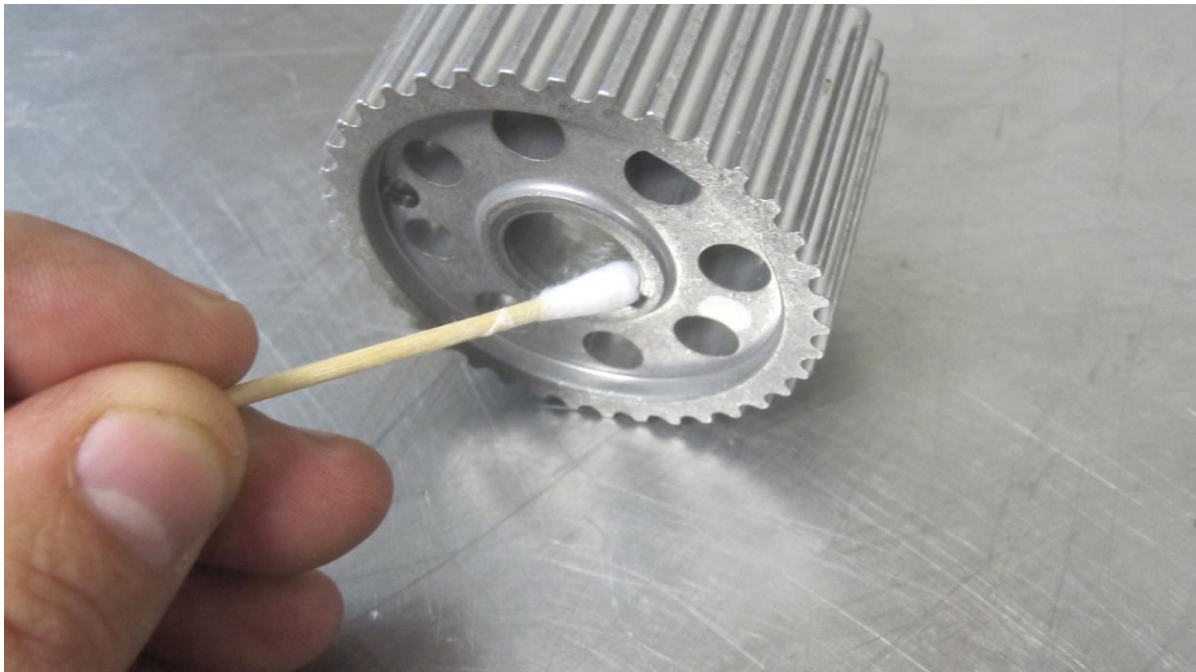
Remove all timing dowel pins from the camshafts pulleys, using the spanner wrench or 3/4" socket to relieve force if the pulley is under load.

Now remove all three camshaft pulley nuts using 3/4" socket and spanner (part #530-0016):



Remove pulleys if possible. Do not use tools, if the pulleys are tight, skip to the next step.

If pulley can easily be removed: clean mating surfaces, and use a swab to apply a dab of loctite 242 to inside of pulley and reassemble:



If pulley cannot be easily removed: use a swab to wipe some Loctite 243(blue) around pulley/camshaft interface:



Now apply some 243(blue) loctite to the new unserrated flange nuts and install. Use the spanner wrench to assist in torquing the nuts to 60 ft-lbs.

Now reinstall the 3/16" timing dowel pins, using spanner wrench if needed. Make sure pinion timing mark is on FTDC.

Reinstall belt as outlined in the service manual, making sure direction is the same as step 1. Apply some loctite 243 (blue) to pinion bolt threads, and install new flange washer and bolt in pinion shaft. Torque to 60 ft-lbs.

We recommend installing belt cover spacer kit (500-0257) if not already installed.

To remove pinion pulley:

If pinion pulley needs to be removed, you may need to heat pulley with propane torch for no more than 30 seconds. Slight discoloration of pulley will do no harm. Use two pry bars behind the pulley to remove it, using slight pressure against the cam cover to remove.